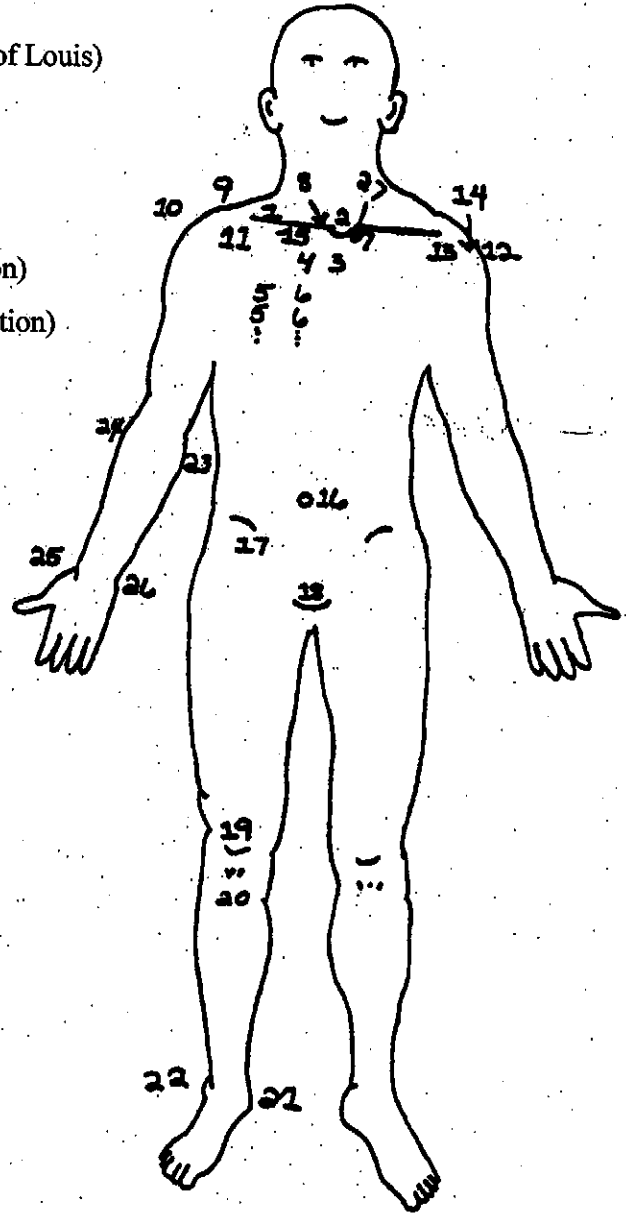


II. LANDMARKS FOR POSTURAL STUDY

A. Anterior View

Seated and Supine

1. Clavicle
2. Jugular notch (Episternal notch) (Suprasternal notch)
3. Sternal angle
4. Second costal cartilage (level of Angle of Louis)
5. Costochondral junctions
6. Chondrosternal junctions
7. Costoclavicular space
8. Sternoclavicular joint (palpate for motion)
9. Acromioclavicular joint (palpate for motion)
10. Tip of acromion process
11. Coracoid process
12. Greater tubercle of humerus
13. Lesser tubercle of humerus
14. Intertubercular groove
15. Infraclavicular fossa
16. Umbilicus
17. Anterior superior iliac spine (ASIS)
18. Pubic symphysis (Pubes)
19. Patella
20. Tibial tuberosity
21. Medial malleolus
22. Lateral malleolus
23. Medial epicondyle - humerus
24. Lateral epicondyle - humerus
25. Styloid process - radius
26. Styloid process - ulna
27. Synchrondrosis - 1st rib with manubrium



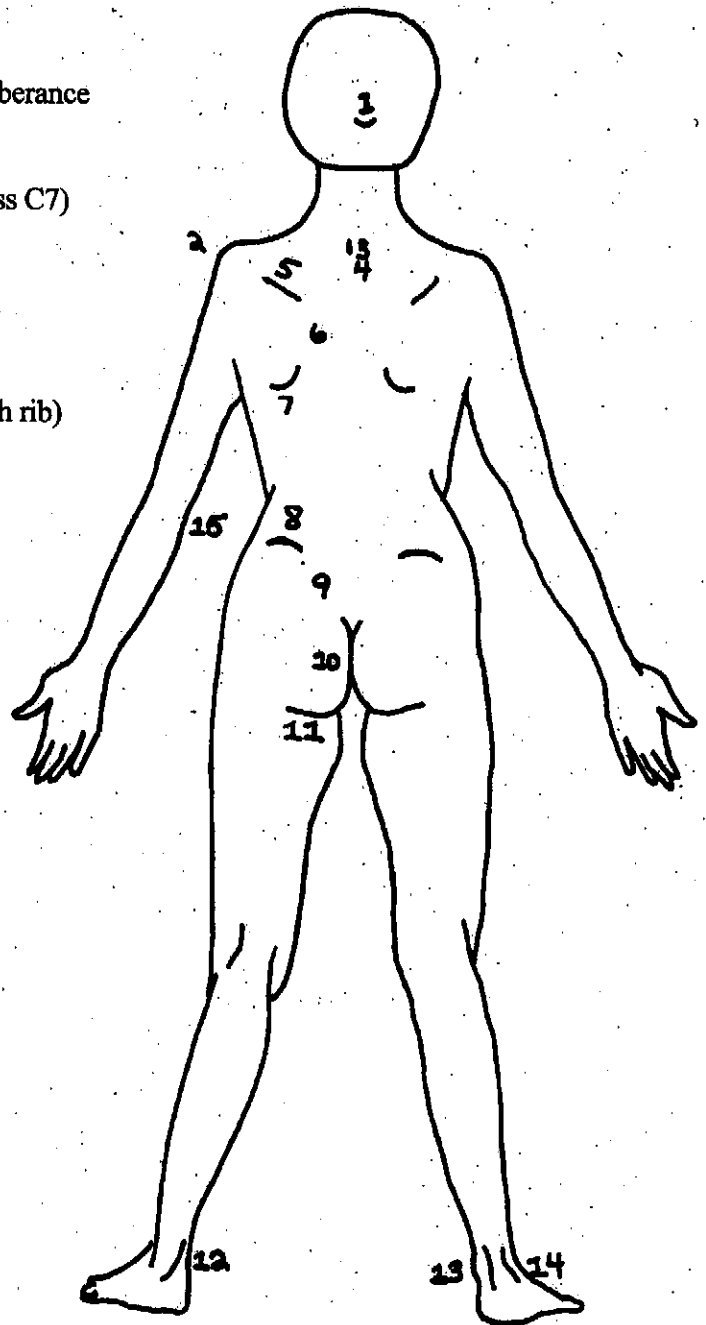
B. Posterior View

Seated and Standing

1. Posterior or external occipital protuberance
- *2. Tip of acromion process
- *3. Vertebra prominens (spinous process C7)
- *4. Spinous process T1
5. Spine of scapula
6. Vertebral border of scapula
- **7. Inferior angle of scapula (level of 7th rib)

Standing and Supine

8. Crest of ilium
- ***9. Posterior superior iliac spine (PSIS)
10. Natal fold
11. Gluteal fold
12. Achilles' tendon
13. Medial malleolus
14. Lateral malleolus
15. Olecranon process - ulna



***Observe if one shoulder is carried higher than the other.**

****Observe the levels of the scapulae.**

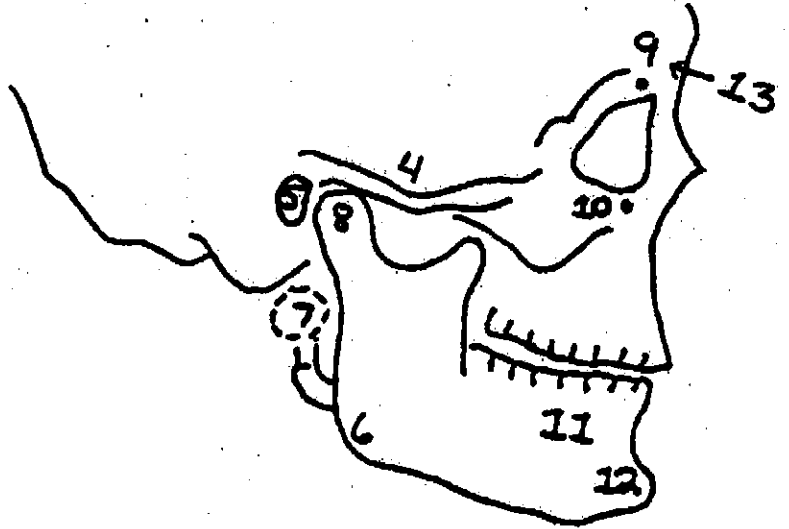
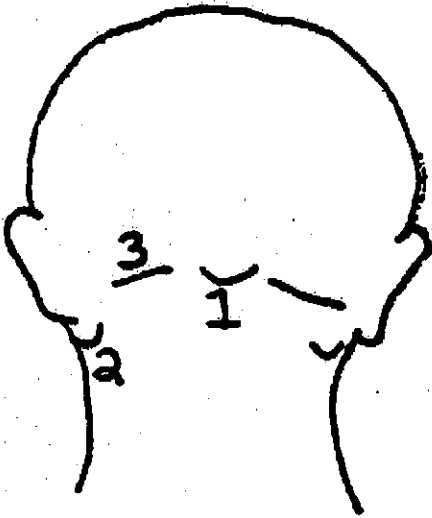
*****What causes the dimpling effect at the posterior superior iliac spine?**

***The spinous process of C7 slips forward with backward bending of the cervical spine.**

C. Head

Seated and Supine

1. Posterior or external occipital protuberance (Inion)
2. Mastoid process of the temporal bone
3. Superior nuchal line



4. Zygomatic arch
5. External auditory meatus (Acoustic)
6. Angle of mandible
7. Transverse process of atlas (C1)
(Midway between the tip of the mastoid process and the angle of the mandible)
8. Temporomandibular joint
(Anterior to external auditory meatus; below zygomatic arch)
9. Supraorbital foramen (notch)
10. Infraorbital foramen (notch)
11. Mental foramen
12. Symphysis menti
13. Glabella (Smooth area on the frontal bone between the superciliary arches)